

**HAMBLETON DISTRICT COUNCIL**

**Report To:** Cabinet  
16 July 2013

**Subject: PUBLIC OPEN SPACE, SPORT AND RECREATION ACTION PLANS**

Topcliffe, Leeming Bar and Broughton and Greenhow Wards  
Portfolio Holder for Leisure and Health: Councillor Mrs S Shepherd

---

**1.0 PURPOSE AND BACKGROUND:**

- 1.1 The Council's policy is to endorse Public Open Space, Sport and Recreation Sub Area Action Plans to provide a more strategic and efficient process for allocating future Section 106 monies (see Annex A) either from LDF allocations or windfall sites.
- 1.2 The purpose of this report is to endorse the Public Open Space, Sport and Recreation Action Plan for Kirby Fleetham and Great Broughton; and the refreshed Action Plan for Dalton.
- 1.3 The Council's policy states that each Action Plan must comply with the following:-
- Ascertain what is already provided
  - Consider public open space, sport and recreation projects that are included in the local Community or Parish Plan to identify existing need
  - Includes consultation with community groups that manage public open space, sport or recreation facilities to identify future need
  - Includes consultation with the District Council Elected Member(s) and the Local Area Partnership
  - Meet the obligations of Public Open Space, Sport and Recreation SPD
  - Is signed off by a Council Director

The Action Plans detailed in 1.2 meet this criterion.

- 1.4 Copies of the Action Plans detailed in 1.2 are available at Annex B.

**2.0 LINK TO COUNCIL PRIORITIES:**

- 2.1 This links primarily to the Leisure and Health priority of the Council.

**3.0 FINANCIAL IMPLICATIONS:**

- 3.1 The main method of delivery of S106 allocations is to passport external funding from developers to community groups. Funds will not be committed or released to organisations until the Council has received the monies from the developer.
- 3.2 Action Plans will be subject to 12 monthly reviews to determine progress to ensure that the projects are still relevant and viable.

**4.0 LEGAL IMPLICATIONS:**

4.1 There is a legal responsibility upon the Council to ensure this funding is used in a way consistent with the individual S106 Agreements.

**5.0 SECTION 17 CRIME AND DISORDER ACT 1998:**

5.1 Some of these projects have the potential to reduce crime and disorder through providing diversionary activity for young people.

**6.0 EQUALITY/DIVERSITY ISSUES:**

6.1 All projects in receipt of this funding should have equal access and be available for the general public to use.

**7.0 RECOMMENDATION:**

7.1 It is recommended that the Public Open Space, Sport and Recreation Action Plan in Annex B be endorsed.

DAVID GOODWIN

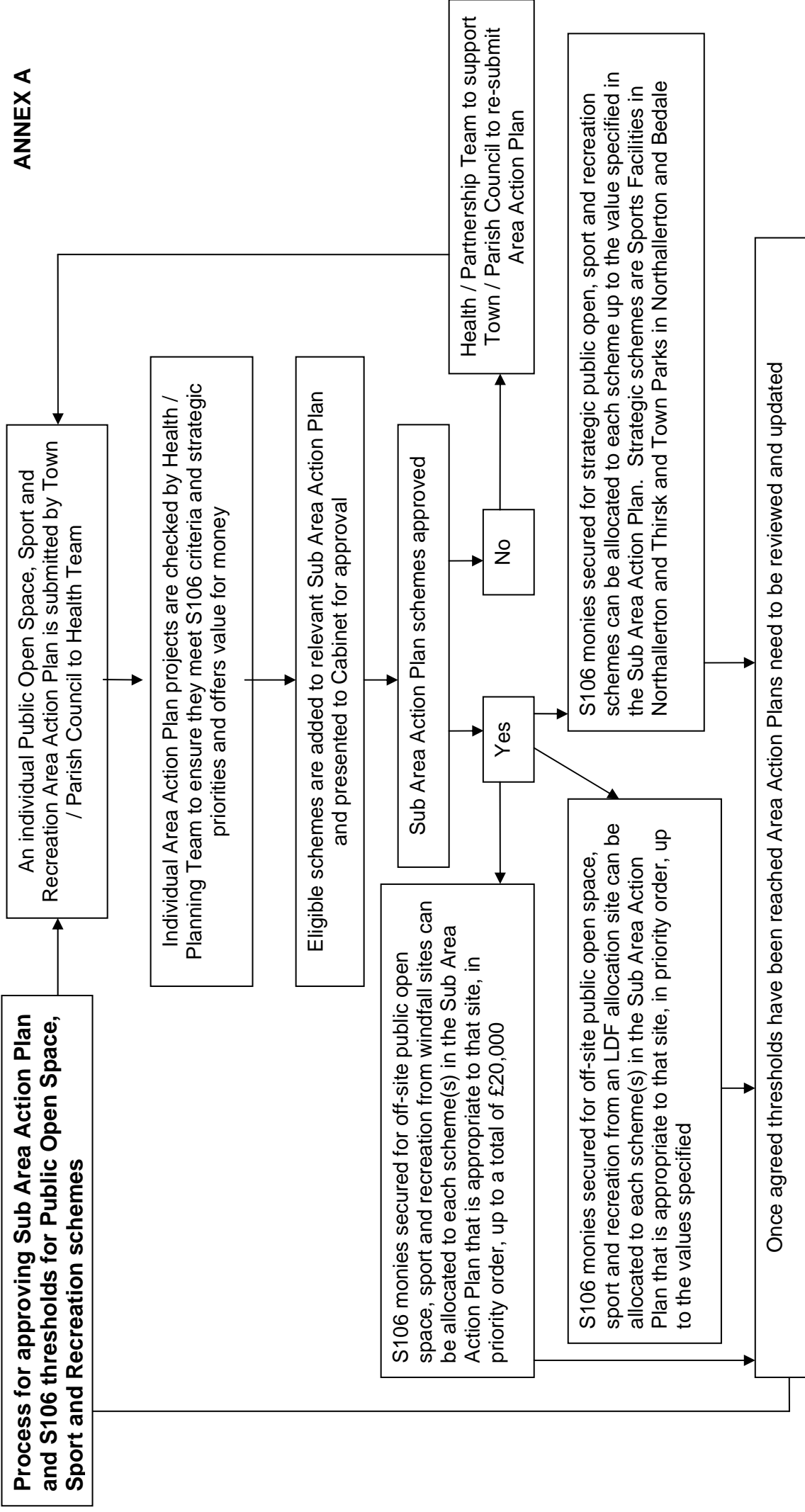
**Background papers:** Hambleton Local Development Framework – Open Space, Sport and Recreation Supplementary Planning Document

**Author ref:** DRG

**Contact:** David Goodwin  
Director of Leisure and Health  
01609 767147

# Process for approving Sub Area Action Plan and S106 thresholds for Public Open Space, Sport and Recreation schemes

## ANNEX A





**PUBLIC OPEN SPACE, SPORT AND RECREATION ACTION PLAN – DALTON (REFRESH MAY 2013)**

What POS / Sport / Recreation facilities do you have already?	Managing organisation and contact details	Future actions	How do you know there is a need for this project?	Estimated cost (£)	Community Priority (1 = highest priority)
Football Pitch	Parish Council	Piped drainage scheme with sand grooves to the field. Typical costs include levelling, all preliminaries, setting up, transport, installation of pipe drainage scheme, installation of sand grooves, application of fertilizers, seeding and making good We will also have to pay for water and electricity to be connected and will also have to create a car parking area	To enable the facility to be useable/sustainable	£42,350	1
Car park and services	Parish Council	Cost of erecting a building for use as a pavilion to include all windows, doors, locks, internal walls, showers etc.	To enable the facility to be useable/sustainable	£38,000	2
Pavilion	Parish Council		To encourage more use of the facilities	£30,000	3

**PUBLIC OPEN SPACE, SPORT AND RECREATION ACTION PLAN – KIRBY FLEETHAM**

What POS / Sport / Recreation facilities do you have already?	Managing organisation and contact details	Future actions	How do you know there is a need for this project?	Estimated cost (£)	Community Priority (1 = highest priority)
Kirby Fleetham Greens	Kirby Fleetham Parish Council	Installation of a bench seat to benefit all residents	Requests by residents	£500.00	1
Great Fencote Green	Kirby Fleetham Parish Council	Installation of a bench seat to benefit all residents	Requests by residents	£500.00	2
Little Fencote Common Land	Kirby Fleetham Parish Council	Installation of a bench seat to benefit all residents	Requests by residents	£500.00	3
Butchers Bank Wildlife Project	Kirby Fleetham Parish Council and NYCC	Installation of a bench seat to benefit all residents and wooden balance posts suitable for 4-10 year olds	Requests by residents	£800.00	4
Kirby Fleetham Village Hall	Kirby Fleetham Village Hall Trustees	Proposed development to increase storage to enhance facilities and increase usage	Various consultation in 2006 and 2011	£12,000.00	5

**PUBLIC OPEN SPACE, SPORT AND RECREATION ACTION PLAN – GREAT BROUGHTON**

What POS / Sport / Recreation facilities do you have already?	Managing organisation and contact details	Future actions	How do you know there is a need for this project?	Estimated cost (£)	Community Priority (1 = highest priority)
Sport club, tennis courts, cricket pitch and football pitch area	Broughton and Kirkby Sports Club	Drainage for cricket pitch	Flooding prevents play from taking place	£1500	1
A play park suitable for children up to the age of 8	Great & Little Broughton Parish Council	To extend the existing play park to have additional resources	The park is well used and could be improved further with additional resources.	£25,000	2
Sport club, tennis courts, cricket pitch and football pitch area	Broughton and Kirkby Sports Club	Refurbish visitor entrance and changing room including toilets for disabled use	Visitor comments and disabled access	£3000	3
Sport club, tennis courts, cricket pitch and football pitch area	Broughton and Kirkby Sports Club	Provide hard standing areas and screening at entrance for container and refuse area	Improve hygiene and attractiveness of the open space area	£1500	4