

HAMBLETON DISTRICT COUNCIL

Report To: Cabinet
11 September 2012

Subject: PUBLIC OPEN SPACE, SPORT AND RECREATION ACTION PLANS

**Easingwold, Northallerton and Thirsk Ward(s)
Scrutiny Committees
Portofolio Holder for Leisure and Health: Councillor P Wilkinson**

1.0 PURPOSE AND BACKGROUND:

1.1 The Council's policy is to endorse Public Open Space, Sport and Recreation Sub Area Action Plans to provide a more strategic and efficient process for allocating future Section 106 monies (see Annex A) either from LDF allocations or windfall sites.

1.2 The purpose of this report is to endorse the Public Open Space, Sport and Recreation Action Plans for Brompton, Easingwold, Huby, Newton on Ouse, Raskelf, Romanby, Sowerby and Thirsk

1.3 The Council's policy states that each Action Plan must comply with the following:

- Ascertain what is already provided
- Consider public open space, sport and recreation projects that are included in the local Community or Parish Plan to identify existing need
- Includes consultation with community groups that manage public open space, sport or recreation facilities to identify future need
- Includes consultation with the District Council Elected Member(s), the Local Area Forum, the local Area Partnership
- Meet the obligations of Public Open Space, Sport and Recreation SPD
- Is signed off by a Council Executive Director

The Action Plans detailed in 1.2 meet this criterion.

1.4 Copies of the Action Plans detailed in 1.2 are available at Annex B.

2.0 DECISIONS SOUGHT:

2.1 The decision sought relates to endorsing the Public Open Space, Sport and Recreation Action Plans in Annex B.

3.0 LINK TO CORPORATE PRIORITIES:

3.1 This links primarily to the Health priority of the Council.

4.0 RISK ASSESSMENT

4.1 There is no risks identified within this report.

5.0 SUSTAINABILITY IMPLICATIONS:

5.1 The Council's approach to all these projects is that they need to be sustainable at a local community level and for that reason the projects are owned, delivered and managed by local community groups.

6.0 FINANCIAL IMPLICATIONS AND EFFICIENCIES:

6.1 The main method of delivery of S106 allocations is to passport external funding from developers to community groups. Funds will not be committed or released to organisations until the Council has received the monies from the developer.

6.2 Action Plans will be subject to 12 monthly reviews to determine progress to ensure that the projects are still relevant and viable.

7.0 LEGAL IMPLICATIONS:

7.1 There is a legal responsibility upon the Council to ensure this funding is used in a way consistent with the individual S106 Agreements.

8.0 SECTION 17 CRIME AND DISORDER ACT 1998:

8.1 Some of these projects have the potential to reduce crime and disorder through providing diversionary activity for young people.

9.0 EQUALITY/DIVERSITY ISSUES:

9.1 All projects in receipt of this funding should have equal access and be available for the general public to use.

10.0 RECOMMENDATION:

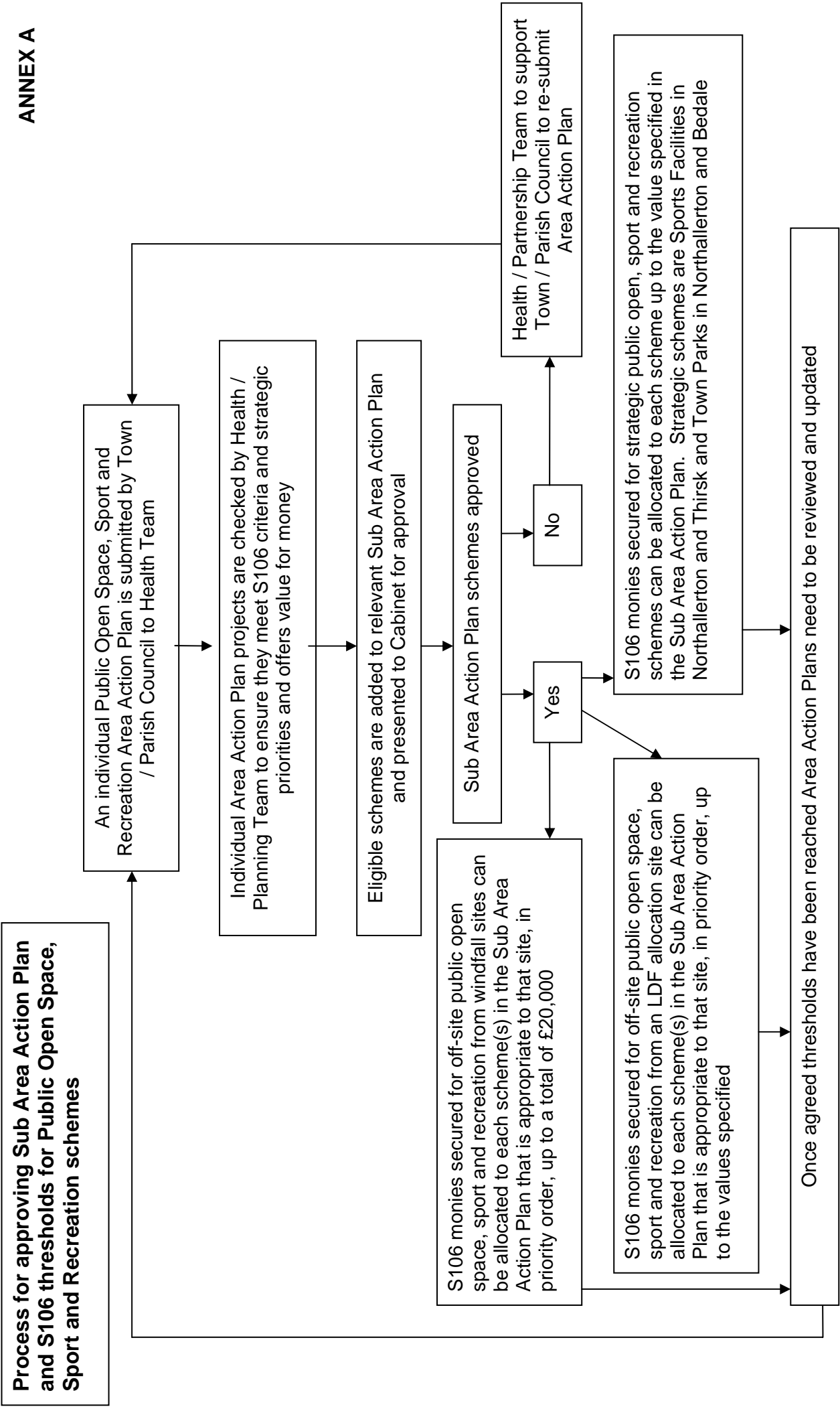
10.1 It is recommended that the Public Open Space, Sport and Recreation Action Plan in Annex B be endorsed.

DAVE GOODWIN

Background papers: None

Author ref: DRG

Contact: Dave Goodwin
Assistant Director Health
Direct Line No: 767147



Process for approving Sub Area Action Plan and S106 thresholds for Public Open Space, Sport and Recreation schemes

An individual Public Open Space, Sport and Recreation Area Action Plan is submitted by Town / Parish Council to Health Team

Individual Area Action Plan projects are checked by Health / Planning Team to ensure they meet S106 criteria and strategic priorities and offers value for money

Eligible schemes are added to relevant Sub Area Action Plan and presented to Cabinet for approval

S106 monies secured for off-site public open space, sport and recreation from windfall sites can be allocated to each scheme(s) in the Sub Area Action Plan that is appropriate to that site, in priority order, up to a total of £20,000

Sub Area Action Plan schemes approved

Yes

No

Health / Partnership Team to support Town / Parish Council to re-submit Area Action Plan

S106 monies secured for off-site public open space, sport and recreation from an LDF allocation site can be allocated to each scheme(s) in the Sub Area Action Plan that is appropriate to that site, in priority order, up to the values specified

S106 monies secured for strategic public open, sport and recreation schemes can be allocated to each scheme up to the value specified in the Sub Area Action Plan. Strategic schemes are Sports Facilities in Northallerton and Thirsk and Town Parks in Northallerton and Bedale

Once agreed thresholds have been reached Area Action Plans need to be reviewed and updated

PUBLIC OPEN SPACE, SPORT AND RECREATION ACTION PLAN – BROMPTON

| What POS / Sport / Recreation facilities do you have already? | Managing organisation and contact details | Future actions | How do you know there is a need for this project? | Estimated cost (£) | Community Priority (1 = highest priority) |
|---|---|--|--|--------------------|---|
| An 8 acre field used for football and general recreation, an adventure playground for young children, a sports pavilion that provides 6 changing rooms, a meeting room and a 40 space car park. | Brompton Recreation Association. | <p>Replace the current safety surfacing with grasscrete tiles which will allow the water to permeate and prevent this issue.</p> <p>Install seating around the entrance of the changing room</p> | Public consultations held in 2012 and the results of the annual ROSPA report | £16,800.00 | 1 |
| Village greens – Water End | Brompton Parish Council | <p>Partial fencing to the northern end of the Greens to prevent car parking on the Greens (the Council has already acquired land nearby to provide a car park for residents – currently applying for planning). Relaying parts of the greens that become extremely water logged in inclement weather – including field drains, levelling and reseeding.</p> <p>Purchasing additional dog waste and litter bins and new information signing</p> | Public consultations held with all households in January 2012 | £12,100.00 | 2 |

PUBLIC OPEN SPACE, SPORT AND RECREATION ACTION PLAN – EASINGWOLD

| What POS / Sport / Recreation facilities do you have already? | Managing organisation and contact details | Future actions | How do you know there is a need for this project? | Estimated cost (£) | Community Priority (1 = highest priority) |
|---|---|---|---|--------------------|---|
| Millfields Open Space | Easingwold Town Council | Football nets & rugby posts – to be situated on the recreational area at Millfields – rugby and football post combination to best utilise space | Residents and children who live near the area who regularly take children to the play area have requested nets and posts. | £3,500.00 | 1 |
| Chase Garth Open Space | Easingwold Town Council | Provision of 3 new seats in the Open Space | Members of the public wish to have a place to rest and enjoy the surroundings in this location | £3,100.00 | 2 |
| Skate Park | Easingwold Town Council | A new project to install a concrete skate park to replace existing skatepark. Concrete skate parks require little maintenance and reduce the noise made. | Direct request from group of young people | £120,000.00 | 3 |
| The Galtres Centre | The Galtres Centre | Provide more single storey storage to cater for more gymnastics equipment/spinning bikes etc; and add single storey studio/spinning room adjacent to new storage area above to accommodate increasing demand | Usage is continuing to increase across all demographics incl. schools | £80,000.00 | 4 |
| Football facilities | Easingwold Town Football Club | Grass pitch drainage scheme | The club has grown within the last 10 years from 2 adult teams to 18 teams for boys, girls, men and women's teams. This is a priority for the Easingwold & Villages Forum | £15,000.00 | 5 |
| Easingwold Outdoor Centre | Easingwold Outdoor Centre | Development of a new meeting room, kitchen and toilet/shower facilities for use by local pre-schools and extensive term-time bookings from local primary schools in addition to camps from youth groups from North and West Yorkshire | Public consultation exercise conducted in 2011. This is a priority for the Easingwold & Villages Forum | £100,000.00 | 6 |
| Bowls Club | Easingwold Bowls Club | Improve accessibility for current members. This will also encourage new membership | Club Members. This is a priority for the Easingwold & Villages Forum | £10,000.00 | 7 |

| | | | | | |
|-------------------------------|-------------------------------|--|--|-------------|----|
| The Galtres Centre | The Galtres Centre | Extend the Fitness Centre to allow for more equipment and build on the increasing membership base | Usage is continuing to increase across all demographics incl. schools | £40,000.00 | 8 |
| Football facilities | Easingwold Town Football Club | Invest to save schemes – installation of solar panels to our south facing roof in order to provide free electricity, development of a permanent pitch perimeter barrier to better comply with league regulations and to generate income for club through advertising space | Facility development plan for Easingwold Town Football Club. This is a priority for the Easingwold & Villages Forum | £18,000.00 | 9 |
| The Galtres Centre | The Galtres Centre | Renovate men's changing area and showers | Usage is continuing to increase across all demographics incl. schools | £15,000.00 | 10 |
| Millfields Open Space | Easingwold Town Council | Trim trail, located around the existing track – installation of 10 natural timber stations | Members of the public are very keen to have innovative ways of exercising without paying a membership. This should be suitable for adults and youths, but not children | £20,000.00 | 11 |
| Memorial Park | Easingwold Town Council | New path from the Memorial Park archway entrance to the bandstand and continuing on to the entrance of the gated play area to preserve grassed area | Worn grassed area | £10,000.00 | 12 |
| Millfields Open Space | Easingwold Town Council | Creation of mud based BMX bike ramps | Letters received from Secondary School pupils who use the park regularly and residents of nearby neighbourhoods who wish to see more for teenagers in the area | £5,000.00 | 13 |
| Football facilities | Easingwold Town Football Club | Improvement to the winter training facilities by building a 61m x 43m 3G artificial grass pitch to FA technical standards to allow 350 people to train on a regular basis as well as playing the clubs mini soccer fixtures on the surface | Survey of parents, players, managers and club officials | £100,000.00 | 14 |
| Cricket and tennis facilities | Easingwold Cricket Club | Explore relocation of a tennis court to improve health and safety. If a viable project the scope of works will include removing & replacing all the fencing, remove & relaying top soil, reseed all grassed areas and all drainage works where required | Consultation with users of both the cricket and tennis clubs. This is a priority for the Easingwold & Villages Forum | £40,000.00 | 15 |

ANNEX B

PUBLIC OPEN SPACE, SPORT AND RECREATION ACTION PLAN – HUBY

| What POS / Sport / Recreation facilities do you have already? | Managing organisation and contact details | Future actions | How do you know there is a need for this project? | Estimated cost (£) | Community Priority (1 = highest priority) |
|---|---|--|---|--------------------|---|
| Children's playground | Huby Playground Appeal | Signage within the Playground and replace fencing to make it safer | Playground committee have identified the need and have a fundraising plan | £3,500.00 | 1 |

ANNEX B

PUBLIC OPEN SPACE, SPORT AND RECREATION ACTION PLAN – NEWTON ON OUSE

| What POS / Sport / Recreation facilities do you have already? | Managing organisation and contact details | Future actions | How do you know there is a need for this project? | Estimated cost (£) | Community Priority (1 = highest priority) |
|---|---|---|--|--------------------|---|
| Village Allotments Society | Newton on Ouse Allotments Association | Equipment to develop and improve facility | Consultation with allotment holders at AGM | £500.00 | 1 |
| Newton on Ouse Green | Newton on Ouse Parish Council | Replacement of chestnut tree which has been removed due to disease. Oak tree to be planted in autumn. | Parish Plan | £100.00 | 2 |
| Cherry Tree avenue | Newton on Ouse Parish Council | Serial removal and replacement of cherry trees due to damage, disease and old age | Parish Plan | £24,000.00 | 3 |
| Newton on Ouse Playing Field | Newton on Ouse Playing Fields Committee | Purchase of a white line market for football, sports day and tennis | Feedback from users | £500.00 | 4 |
| Newton on Ouse Parish Hall | Parish Hall Management Committee | Repairs and maintenance and development of facilities including provision for young children and pre-schoolers. | Several public meetings and village survey of families with children | £80,000.00 | 5 |

ANNEX B

PUBLIC OPEN SPACE, SPORT AND RECREATION ACTION PLAN – RASKELF

| What POS / Sport / Recreation facilities do you have already? | Managing organisation and contact details | Future actions | How do you know there is a need for this project? | Estimated cost (£) | Community Priority (1 = highest priority) |
|---|--|--|---|--------------------|---|
| Street lighting | Raskelf Parish Council | Provide street lighting between the pinfold at the centre of the village and the village hall. 4 columns | Complaints from parishioners | £8,000.00 | 1 |
| Parking | Raskelf Parish Council | Disabled parking area at the front of the church | Request from disabled residents | £1,500.00 | 2 |
| Cricket | Raskelf Recreation and Leisure – Cricket section | Replace square and wicket mowers | Current mowers are old and worn out | £10,000.00 | 3 |
| Tennis | Raskelf Tennis Club | To replace the tennis court surfaces | Assessment by the tennis club | £20,000.00 | 4 |

PUBLIC OPEN SPACE, SPORT AND RECREATION ACTION PLAN – ROMANBY

| What POS / Sport / Recreation facilities do you have already? | Managing organisation and contact details | Future actions | How do you know there is a need for this project? | Estimated cost (£) | Community Priority (1 = highest priority) |
|---|---|---|---|--------------------|---|
| 14 Parks & Open Spaces | Romanby Parish Council | See below | | | |
| Romanby Leisure Park – Meadow project | Romanby Parish Council | Development of wild flower area and meadow to increase bio-diversity and to utilise disused space | Feedback from residents and national policy | £1,000.00 | 1 |
| Romanby Leisure Park – Ainderby Road | Romanby Parish Council | Improve play space to suit older children | Recent Parishioner Survey | £20,000.00 | 2 |
| Grange Close Play Area | Romanby Parish Council | Improve play space to suit older children | Recent Parishioner Survey | £20,000.00 | 3 |
| Football facilities | Northallerton Town Football Club | To improve the quality and access of the junior facilities by upgrading the pitches at the Club | Feedback from users | £20,000.00 | 4 |
| Football facilities | Northallerton Town Football Club | To improve the quality and access of the junior facilities by upgrading the changing facilities at the Club | Feedback from users | £100,000.00 | 5 |

ANNEX B

PUBLIC OPEN SPACE, SPORT AND RECREATION ACTION PLAN - SOWERBY

| What POS / Sport / Recreation facilities do you have already? | Managing organisation and contact details | Future actions | How do you know there is a need for this project? | Estimated cost (£) | Community Priority (1 = highest priority) |
|---|--|---|--|--------------------|---|
| Football facilities and public open space | Thirsk and Sowerby Flatts Prevention Trust | New changing rooms and sports facilities | Consultation with users and existing poor facilities | £6,000.00 | 1 |
| Skatepark | Thirsk8 Park Ltd | Public art project to enhance bank | Consultation with users and feedback from general public | £1,500.00 | 2 |
| Skatepark | Thirsk8 Park Ltd | Landscaping of site and purchase of street furniture | Consultation with users and feedback from general public | £6,000.00 | 3 |
| Public open space – Miss Warner’s Field | Thirsk and Sowerby Flatts Prevention Trust | Purchase and installation of street furniture | Feedback from general public | £3,000.00 | 4 |
| Play space – Flatts | Sowerby Parish Council | Update existing equipment and installation of new equipment | Feedback from general public | £25,000.00 | 5 |
| Play space – Station Road | Sowerby Parish Council | Develop play space for 8-13 year olds | Feedback from residents | £40,000.00 | 6 |

PUBLIC OPEN SPACE, SPORT AND RECREATION ACTION PLAN – THIRSK

| What POS / Sport / Recreation facilities do you have already? | Managing organisation and contact details | Future actions | How do you know there is a need for this project? | Estimated cost (£) | Community Priority (1 = highest priority) |
|---|--|--|---|--------------------|---|
| <p>Public Open Space/Play Areas :- Alandale, Bellingham Way, Craigs Way, East Thirsk, Holmes, Johnson Close, Rymer Way, Shire Park, Springfield Close, Sensory Garden.</p> <p>Parks/Greens/Recreational :- Whitelass and the Holmes, Picnic Area, Mill Gardens, St James Green, Castlegarth, Millennium Green, Centenary Field, Jungle field, Carrs Field</p> <p>Sports Facilities :-Athletic facilities, Football Pitch, Rugby Pitch, Tennis Courts, Hockey Pitch Swimming Pool</p> <p>Recreation Facilities :- East Thirsk Community Hall</p> | <p>Thirsk Town Council Ethel Johnson Bequest Trust Thirsk Athletic Sports Club Thirsk Falcons F.C Thirsk R.U.F.C Thirsk Tennis Club Thirsk Hockey Club HDC East Thirsk Community Association</p> | <p>See below</p> | | | |
| <p>East Thirsk Community Hall :- 1X Sports Hall for various uses inc. Badminton & Football.</p> | <p>East Thirsk Community Association</p> | <p>Provision of internal stairs to storage area on site to access sports equipment and new kitchen for sports groups to use especially for children's sporting events and leisure activities for older people.</p> | <p>There is a lack of storage space at the hall and sporting groups require equipment storage. The kitchen is 20yrs old and lacks the required facilities for the groups to access. (see supporting letter)</p> | <p>£22,000.00</p> | <p>1</p> |

| | | | | | |
|---|--|---|---|------------|---|
| The Holmes - Park Area with wooden and metal play equipment. | Managed by Thirsk Town Council Open Areas Committee. | All play equipment has been very well used over a number of years and is in need of updating/refurbishment. | The continued/long term usage of the facilities. | £40,000.00 | 2 |
| The Holmes -Park Area with Play Equipment | Managed by Thirsk Town Council Open Areas Committee | Provision of Pedestrian Crossing at Norby Front Street | The Holmes is an extremely well-used public park area with play facilities. The provision of a pedestrian crossing on Norby Front Street would help ensure safe access to the facilities particularly for young children and elderly residents. | £20,000.00 | 3 |
| Mill Gardens Development - play area with adjoining grass/shrubbery area | Thirsk Town Council is to take over ownership of the play area/adjoining open space. | The grass and shrubbery are in worn/poor condition as the layout has not suited the local usage. | The Council would like to remove part of the shrubbery and grass over most of the area to suit local usage. | £5,000.00 | 4 |
| Stone Footpath – Market Place | North Yorkshire County Council | Replacement of natural stone flags | As the existing flags are a natural random stone it is not possible to order flags on an individual basis resulting in tarmac constantly being used as a temporary repair for any broken flags. The footpath is now in a poor and uneven condition and is visually detrimental. | £25,000.00 | 5 |
| Area known locally as half 7 acre is just a field accessed from end of St Mary's Close and continues up to the Millennium Green | Currently privately owned. | Would be suitable for the provision of tennis courts, five a side pitches other sporting facilities. | Lack of Sporting facilities in East Thirsk area | TBC | 6 |

