

HAMBLETON DISTRICT COUNCIL

Report To: Cabinet
11 September 2012

Subject: NEIGHBOURHOOD AREA DESIGNATIONS AT HUBY AND APPLETON WISKE

**Scrutiny Committees
Rudby, Huby and Sutton Wards
Portfolio Holder for Housing and Planning: Councillor M Robson**

1.0 PURPOSE AND BACKGROUND:

- 1.1 The Localism Act 2011 provided a new statutory regime for Neighbourhood Planning. New regulations came into force on 6 April 2012 making legal provisions in relation to that regime and a first step in the process is the designation of Neighbourhood Areas.
- 1.2 Applications were submitted by Huby and Appleton Wiske Parish Councils for designation of their parishes as Neighbourhood Areas to enable them to proceed with formal Neighbourhood Plan preparation (See letters and maps at Annex A).
- 1.3 The Council has been awarded a £20,000 Government grant to assist Huby Parish as a frontrunner for Neighbourhood Plan preparation and we are under a general duty to support Neighbourhood Plan preparation. Discussions have therefore been held with both Parish Councils at an officer level.
- 1.4 The applications for Neighbourhood Area designations have been publicised and now the Council must consider any representations submitted before making a decision on designation of the areas.
- 1.5 Both applications were publicised on Hambleton's website and public notice adverts were placed in local newspapers circulating in the areas. In addition Huby PC put a notice with a copy of the application and map on their village notice board and Appleton Wiske PC included the application letter, map and notice in their parish newsletter, which was delivered to all properties in the parish.
- 1.6 As both applications are valid and there have been no representations submitted objecting to the area designations there is no reason to reject the applications.

2.0 DECISIONS SOUGHT:

- 2.1 Cabinet needs to decide whether to agree the designation of Neighbourhood Areas for Huby Parish and Appleton Wiske Parish. If it decides not to support either of the applications it must give reasons and publicise this decision.

3.0 RISK ASSESSMENT:

- 3.1 There are no significant risks with this decision making. Any slight risk of agreeing with the recommendations outweighs the risks of not agreeing them and is considered acceptable.

4.0 FINANCIAL IMPLICATIONS AND EFFICIENCIES:

- 4.1 There is no cost associated with Neighbourhood Area designation other than a small cost for advertising the decisions in local newspapers and for officer time. However, the Council will incur costs with the subsequent preparation of Neighbourhood Plans. In relation to Huby these costs will be covered by the £20,000 Government grant.

5.0 LEGAL IMPLICATIONS:

- 5.1 The legal requirements under Part 2 of The Neighbourhood Planning (General) Regulations 2012 have been complied with. The next step requires the Council to publish details (area name, map and applicant) of the Neighbourhood Area on our website and in such other manner we consider likely to bring it to the attention of local residents, workers and businesses

6.0 RECOMMENDATIONS:

- 6.1 That Cabinet agrees the designations of Neighbourhood Areas for Huby parish and Appleton Wiske parish and publicises the necessary information.

MICK JEWITT

Background papers: The Neighbourhood Planning (General) Regulations 2012
Public Notice adverts in local newspapers and HDC website notices

Author ref: GB

Contact: Graham Banks
Author – Planning Policy Manager
Direct Line No – 01609 767097

Applications for Neighbourhood Area designation from Appleton Wiske and Huby Parish Councils



Appleton Wiske Parish Council

4 Hunters Ride
Appleton Wiske
Northallerton
DL6 2BD

18/06/2012

Graham Banks
Planning Policy Manager
Civic Centre
Hambleton District Council
Stone Cross
Northallerton, DL6 2UU



Dear Sir,

This is formal notification that Appleton Wiske Parish Council intend to move forward on the Neighbourhood Planning process and produce a Neighbourhood Plan.

This is the first step in that process - a formal request to Hambleton District Council to designate the Parish of Appleton Wiske as our Neighbourhood area (please see map attached). This area is appropriate as it forms the boundary of Appleton Wiske Parish for which the Parish Council is responsible, and does not overlap with other Neighbourhood areas.

Our understanding is that Hambleton District Council must now publicise our request and allow not less than 6 weeks to receive any representations.

Appleton Wiske Parish Council is a relevant body to submit this area application for the purposes of Section 61G of the Town and Country Planning Act 1990.

As you are aware, we have already formed a consultation group and engaged in an extensive consultation process. Therefore, once the six-week consultation period is over, we are hoping to progress through the Neighbourhood Plan process as swiftly as possible.

We know that Huby Parish have been nominated as Hambleton's pathfinder project for Neighbourhood Planning, however we hope that we can work closely together and would appreciate any assistance you are able to provide.

Kind regards

Leonie Smith
Clerk to Appleton Wiske Parish Council

HAMBLETON DISTRICT COUNCIL

APPLETON WISKE NEIGHBOURHOOD AREA

Hambleton Council has received an application from Appleton Wiske Parish Council to designate the whole of the Parish as a Neighbourhood Area.

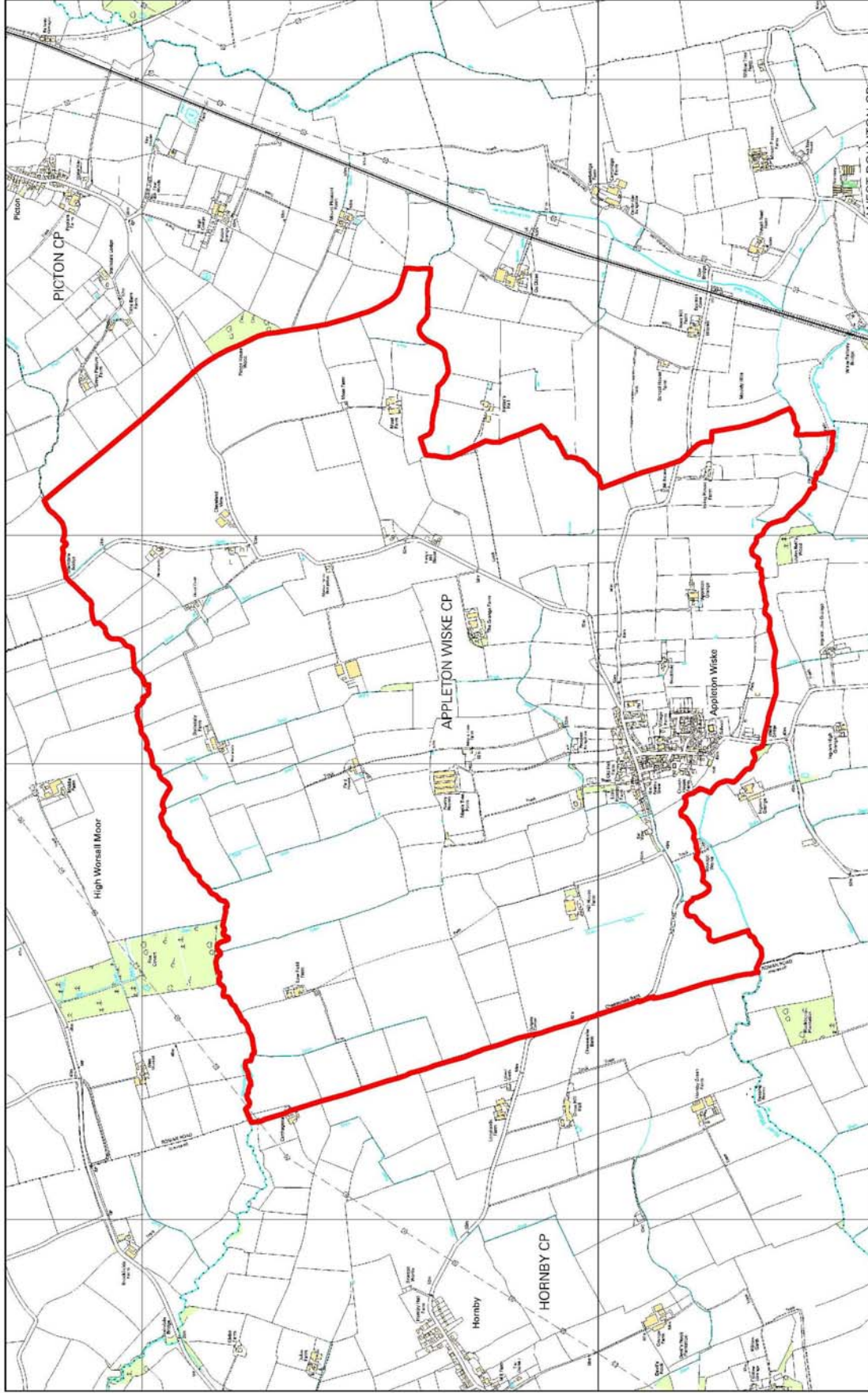
A copy of the area application and details of how to make representations is available to view at www.hambleton.gov.uk/neighbourhoodplans

Representations must be made in writing by Friday 10 August 2012 to:
Planning Policy, Hambleton District Council, Civic Centre, Stone Cross, Northallerton, DL6 2UU or planningpolicy@hambleton.gov.uk

Further information can be obtained from Planning Policy on 0845 1211 555.

Appleton Wiske Neighbourhood Area

20/06/2012



HAMBLETON
DISTRICT COUNCIL

Civic Centre, Stone Cross, Northalerton DL6 2JU
Telephone: 0845 1211 555 Fax: 01609 767228

Reproduced by permission of Ordnance Survey on behalf of HMSO. © Crown copyright and database right 2012.
Ordnance Survey Licence number 100018555



1:15,000



Huby Parish Council

Parish Clerk:
Sue Bracewell
The Herriots
6 Maple Croft
Huby YO61 1JQ
01347 810148
parishclerk@hubypc.co.uk
www.hubypc.co.uk

HUBY NEIGHBOURHOOD PLAN.

Huby Parish council are ready to move forward on the Neighbourhood Planning process. The Parish Council will be supported and guided by Hambleton District Council.

The first step in this process is to submit to Hambleton District Council a request to designate the Parish of Huby as the area for our Neighbourhood Plan. We are submitting a map of that area. This area is appropriate as it forms the boundary of Huby Parish for which the Parish council is responsible and does not overlap with other neighbourhood planning forums or councils. Hambleton District Council must then publicise our request and allow not less than 6 weeks to receive any representations.

With help from one or more of the organisations listed below, the Parish Council will be able to start the community consultation process and set up a steering group to take the project forward. This group needs to be representative of our community. The Parish Council will advertise for interested parties to come forward to join this group.

The next step will be to select the organisation that we feel is best placed to help us produce this plan. Several organisations are in the market for this, many of them have government funding to allow them offer assistance without charge.

The organisation are:

Planning Aid

Planning with People

Princes Foundation (who we have already had some discussions with)

CPRE (Campaign to Protect Rural England)

Rural Action Yorkshire

Cllr Elaine Corden
Chair
22 May 2012

HAMBLETON DISTRICT COUNCIL

HUBY NEIGHBOURHOOD AREA

Hambleton Council has received an application from Huby Parish Council to designate the whole of the Parish as a Neighbourhood Area.

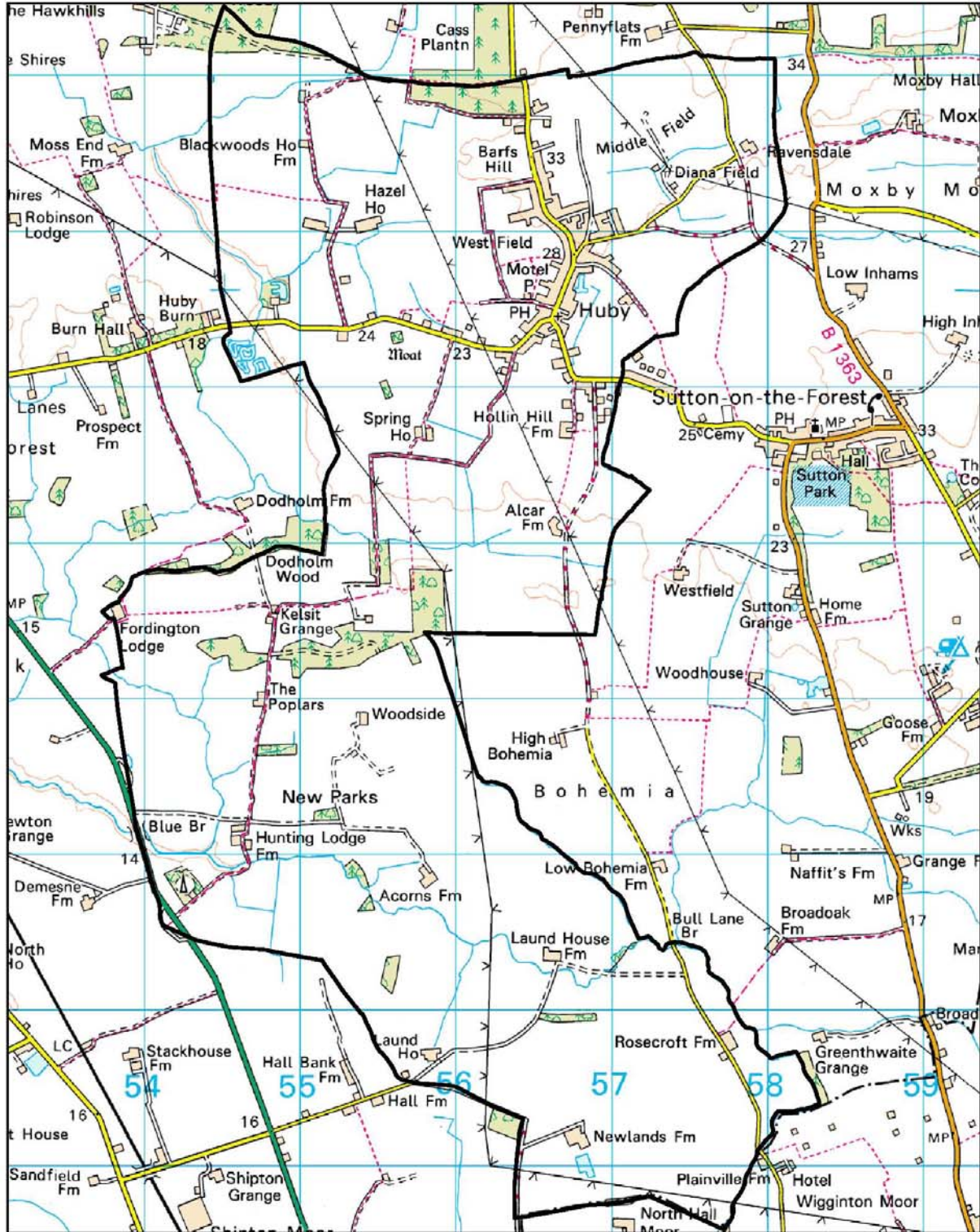
A copy of the area application and details of how to make representations is available to view at www.hambleton.gov.uk/neighbourhoodplans

Representations must be made in writing by Monday 16 July 2012 to:
Planning Policy, Hambleton District Council, Civic Centre, Stone Cross, Northallerton, DL6 2UU or planningpolicy@hambleton.gov.uk

Further information can be obtained from Planning Policy on 0845 1211 555.

Huby Parish

02/11/2011



HAMBLETON
DISTRICT COUNCIL

Civic Centre, Stone Cross, Northallerton DL6 2UU
Telephone: 0845 1211 555 Fax: 01609 767228



1:31,405

Reproduced by permission of Ordnance Survey on behalf of HMSO. © Crown copyright and database right 2011. Ordnance Survey Licence number 100018555